



## THEME MANAGER - USER DOCUMENTATION

**Votre contact :**

Victor POLLET

CEO

[victor.pollet@eruditego.fr](mailto:victor.pollet@eruditego.fr)

+33 (0)6 75 84 69 90

# INTRODUCTION

This document explains how to install and use the Theme Manager application on your SharePoint Online site.

To continue on this document, you must have added the application “Theme Manager” by Eruditego on from the SharePoint Store to your tenant store (validation that should be done by the IT service). You also need to have design permission on site you want to update.

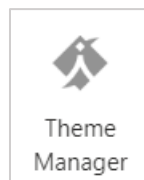
# INSTALLATION

To install the Theme manager, follow the steps :

- Connect to your SharePoint site
- Go on site content
- Click on “New” > “Application”
- On application “Theme Manager” click on “Add”

After a few minutes, application shall be deployed on the site. You need now to add the web part to a page, here a the steps :

- Go on site content
- Click on library “Site Pages”
- Click on “New” > “Site Page”
- Type a name for the page
- Click to add a new web part in the page
- Look for “Theme Manager” and add it



- Once added, no configuration is needed, you can just save the page.

The application is ready to use.

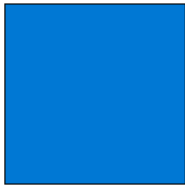
# USAGE

When accessing the page with the application on it, you’ll find this display :



## Current Theme

The current theme on this site has following main colors:



themePrimary



accent



primaryBackground



primaryText

Edit theme

Show details

Theme details

You can see the main colors of your current theme. The name used below are the technical names of the color but have readable names (e.g.: "themePrimary" > "Theme Primary"). When clicking on button "Show details" or on the title "Theme details" all the theme color are available to display :

## Theme details

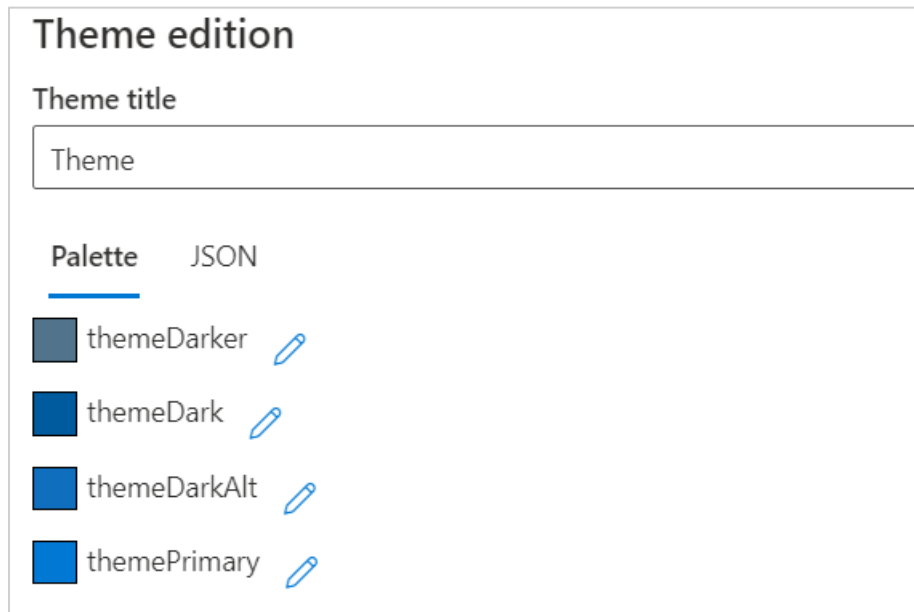
themeDarker	themeDark	themeDarkAlt
themePrimary	themeSecondary	themeTertiary
themeLight	themeLighter	themeLighterAlt
black	blackTranslucent40	neutralDark
neutralPrimary	neutralPrimaryAlt	neutralSecondary
neutralSecondaryAlt	neutralTertiary	neutralTertiaryAlt
neutralQuaternary	neutralQuaternaryAlt	neutralLight
neutralLighter	neutralLighterAlt	accent
white	whiteTranslucent40	yellowDark
yellow	yellowLight	orange
orangeLight	orangeLighter	redDark
red	magentaDark	magenta
magentaLight	purpleDark	purple
purpleLight	blueDark	blueMid
blue	blueLight	tealDark
teal	tealLight	greenDark

If you change the theme while using the component, all color will be updated live.

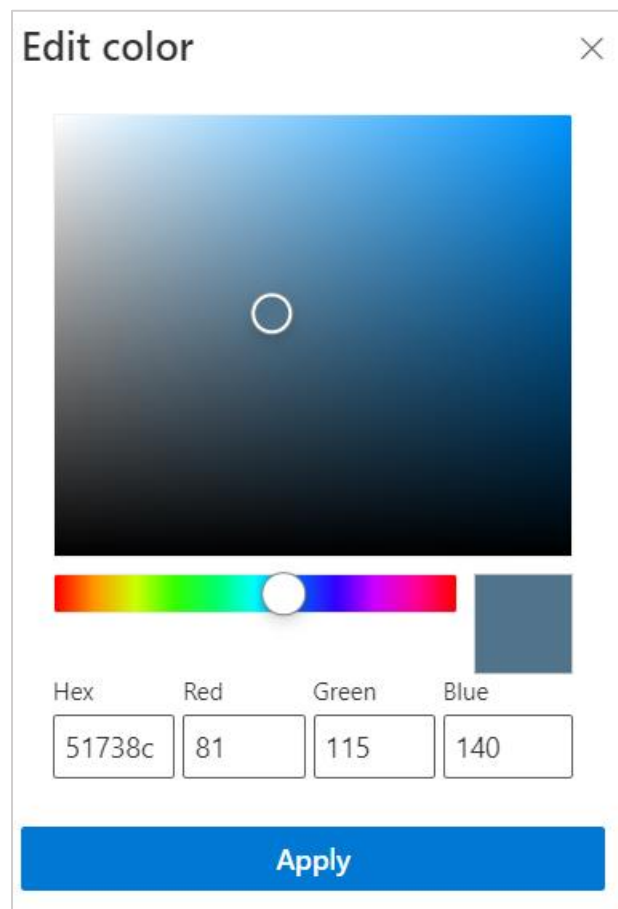
# UPDATING COLORS



To update colors, you need to click on the button “Edit theme”. A new tab opens with all color of the theme you can edit :

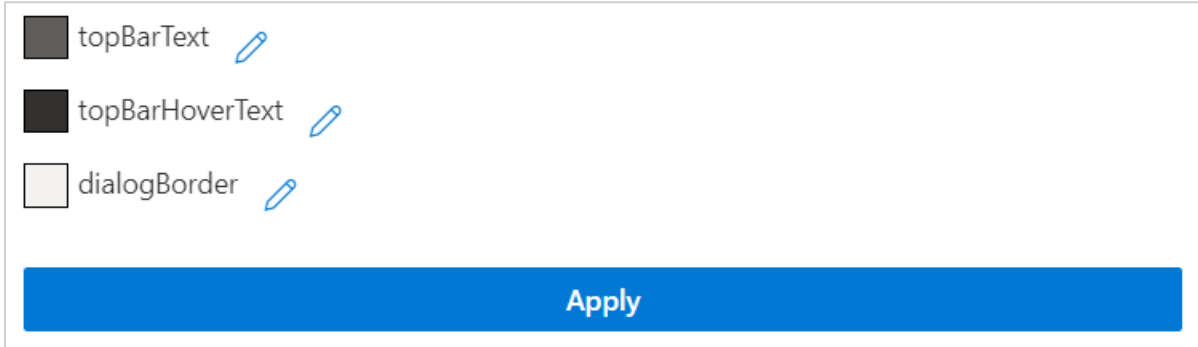


By clicking on the pen icon, you'll be able to edit the selected color.



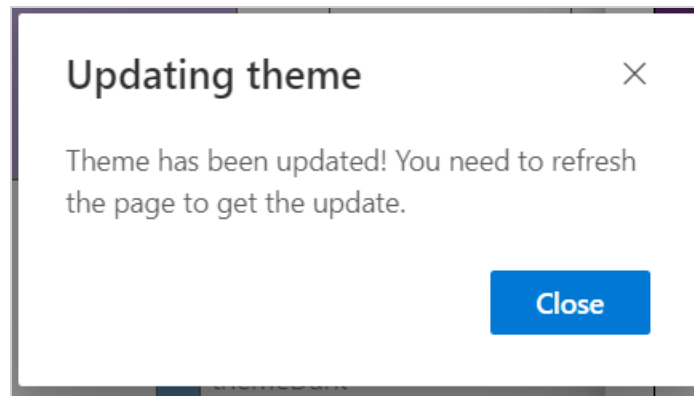
Editor allow you to select the color using a color with selectors, hexadecimal value or RGB (red, green, blue) values. When clicking on apply the color will be set for the future theme.

You can edit part or all colors, the theme will only be applied on the site when clicking on the button apply at the bottom of the panel:



*Note: Dismissing the panel will cancel your changes.*

When applying the theme, a confirmation is asked to the user, you need to confirm to apply the colors. When the new theme is applied, you need to refresh the page to see the changes :



## ASSISTED COLOR EDITION

If you need to create a theme quickly or use a base as a color set and edit it afterwards, you can use the PnP site for theming : <https://fluentuipr.z22.web.core.windows.net/heads/master/theming-designer/index.html>

There you can get a full theme by setting 3 base colors. Once your configured your theme on this site, you can export it and get JSON code :




```
Code  JSON  PowerShell
{
  "themePrimary": "#0078d4",
  "themeLighterAlt": "#eff6fc",
  "themeLighter": "#deecf9",
  "themeLight": "#c7e0f4",
  "themeTertiary": "#71afe5",
  "themeSecondary": "#2b88d8",
  "themeDarkAlt": "#106ebe",
  "themeDark": "#005a9e",
  "themeDarker": "#004578",
  "neutralLighterAlt": "#faf9f8",
  "neutralLighter": "#f3f2f1",
  "neutralLight": "#edebe9",
  "neutralQuaternaryAlt":
"#e1dfdd",
  "neutralQuaternary":
```

Once you copied this theme JSON, you can add it to the Theme Manager by opening the “Edit theme” panel and clicking on tab “JSON” :



Palette **JSON**

 This section is dedicated for advanced users, you can edit the palette JSON and copy/paste it to another site.

**JSON**

```

{
  "themeDarker": "#87518c",
  "themeDark": "#005a9e",
  "themeDarkAlt": "#106ebe",
  "themePrimary": "#0078d4",
  "themeSecondary": "#2b88d8",
  "themeTertiary": "#71afe5",
  "themeLight": "#c7e0f4",
  "themeLighter": "#deecf9",
  "themeLighterAlt": "#eff6fc",
  "black": "#000000",
  "blackTranslucent40": "rgba(0,0,0,.4)",
  "neutralDark": "#201f1e",
  "neutralPrimary": "#323130",
  "neutralLight": "#f1f3f4",
  "neutralLighter": "#f5f7f8",
  "neutralLighterAlt": "#f9f9f9"
}

```

Copy to clipboard

Apply

Paste the JSON code here and then apply directly the theme (the PnP tool does not provide all possible colors so we recommend to apply the theme first). When applied refresh the page and edit the color panel as shown in previous section.


## COPY/PASTE THEME TO ANOTHER SITE

To perform these actions, you need to deploy the web part on the source and destination sites, please ensure that you've already done that.

To copy paste, go on the web part on the source site, and open the "Edit theme" panel. Go in JSON tab and click on button "Copy to clipboard":



Palette **JSON**

 This section is dedicated for advanced users, you can edit the palette JSON and copy/paste it to another site.

**JSON**

```
{
  "themeDarker": "#87518c",
  "themeDark": "#005a9e",
  "themeDarkAlt": "#106ebe",
  "themePrimary": "#0078d4",
  "themeSecondary": "#2b88d8",
  "themeTertiary": "#71afe5",
  "themeLight": "#c7e0f4",
  "themeLighter": "#deecf9",
  "themeLighterAlt": "#eff6fc",
  "black": "#000000",
  "blackTranslucent40": "rgba(0,0,0,.4)",
  "neutralDark": "#201f1e",
  "neutralPrimary": "#323130",
  "neutralLight": "#f0f0f0",
  "neutralLighter": "#f5f5f5",
  "neutralLighterAlt": "#f9f9f9",
  "white": "#ffffff"
}
```

**Copy to clipboard**

Then go on the destination site, open the “Edit theme” panel, go on the JSON tab and paste the JSON in the form. You can now apply and the theme is now copied.

## SUPPORT

If you encounter any issue, please contact us by email: [support@eruditego.fr](mailto:support@eruditego.fr)

